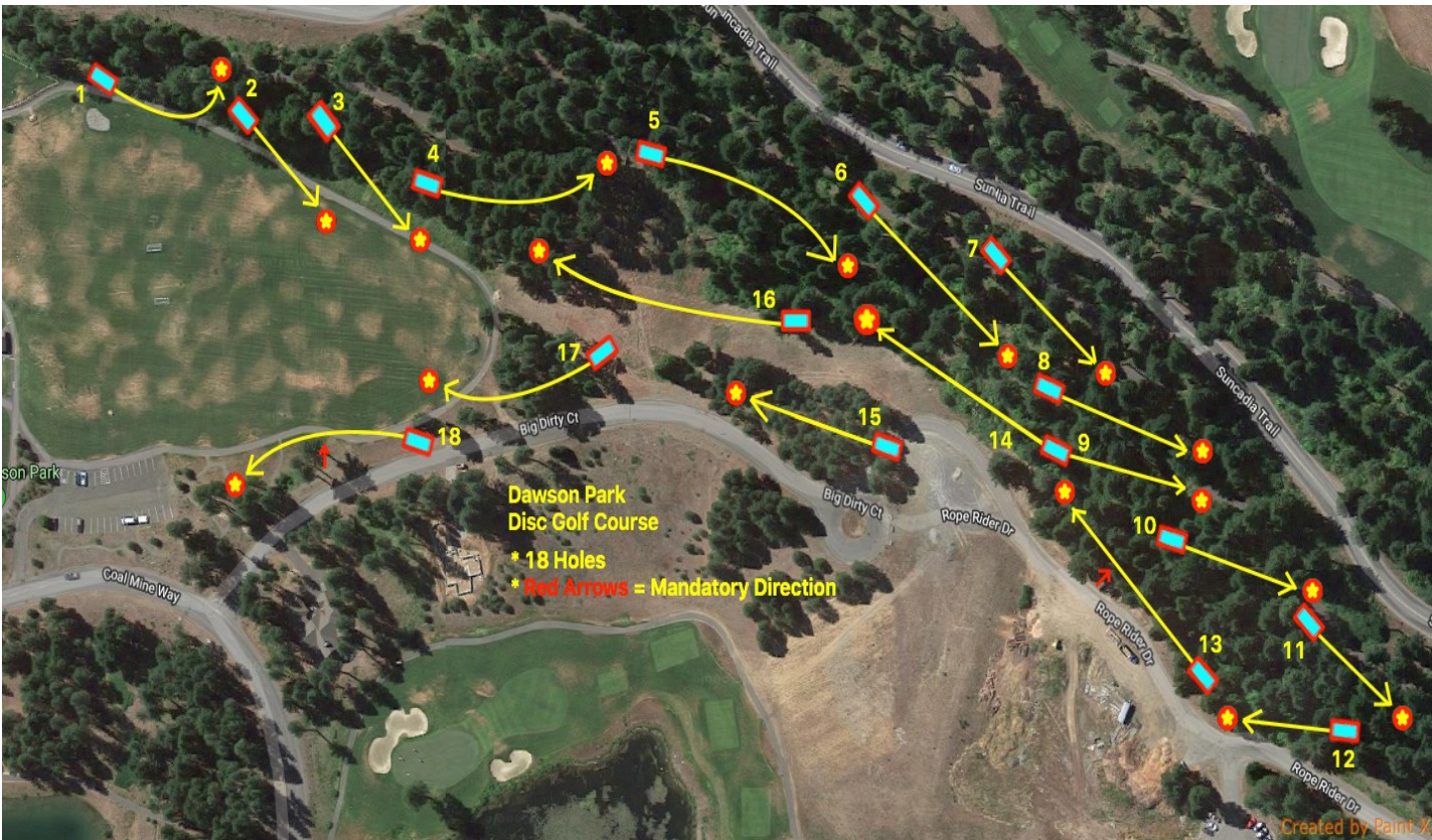


<b>Hole</b>	<b>1</b>	<b>2</b>	<b>3</b>	<b>4</b>	<b>5</b>	<b>6</b>	<b>7</b>	<b>8</b>	<b>9</b>	<b>Out</b>	
<b>Distance</b>	190 ft.	150	220	170	260	244	144	135	160	1673	
<b>Pro Par</b>	3	3	3	3	3	3	3	3	3	27	
<b>Am Par</b>	3	3	3	4	4	4	3	3	3	30	
<b>Hole</b>	<b>10</b>	<b>11</b>	<b>12</b>	<b>13</b>	<b>14</b>	<b>15</b>	<b>16</b>	<b>17</b>	<b>18</b>	<b>In</b>	<b>Total</b>
<b>Distance</b>	200	224	170	190	277	187	306	231	239	2024	3697
<b>Pro Par</b>	3	3	3	3	3	3	3	3	3	27	54
<b>Am Par</b>	4	3	3	3	4	3	4	3	3	30	60

# DAWSON PARK DISC GOLF COURSE



## Dawson Park Disc Golf Rules and Notes

- This is a wooded course with steep terrain, exposed tree roots and other potential hazards. Wear appropriate footwear and watch your step. Play at your own risk.
- Never throw when players or other park users are within range. Always give park users the right of way. Be aware of your surroundings and environment.
- Some fairways are near bicycle paths or roadways. Trees marked with red arrows are to keep discs away from these areas. They are noted on tee signs as "Mando's".
- If a disc passes on the wrong side of a mando, there is a one-stroke penalty and the player must replay the throw from the previous lie.
- Keep groups to four players or less to keep up the pace.
- Play just nine holes by completing the first 5, then head downhill to tee #15
- Take your litter with you. There is a trashcan near the 4th basket.
- The one who has the most fun wins!"

